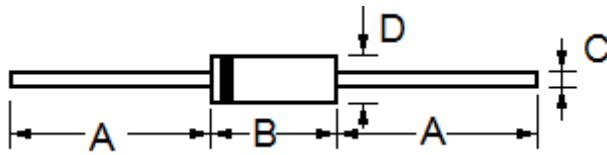


**低电容瞬态抑制二极管 Low Capacitance Axial Leaded TVS SAC5.0 --- SAC50**

- 500 Watt Peak Power
- Dimension

**DO-15**

Dim	Millimeters		Inches	
	Min	Max	Min	Max
A	25.4	---	1.000	---
B	5.80	7.60	0.230	0.300
C	0.70	0.90	0.028	0.034
D	2.60	3.60	0.104	0.140

- Specification

Type Number	Reverse Stand-Off Voltage	Maximum Reverse Leakage @VRMW	Breakdown Voltage Min. @IT	Test Current	Maximum Clamping Voltage @ IPP=5.0A	Peak Pulse Current	Working Inverse Blocking Voltage	Inverse Blocking Leakage @ VWIB	Peak Inverse Blocking Voltage	Maximum Junction Capacitance @ 0 Volts
	V <sub>RMW</sub> (V)	I <sub>R</sub> ( $\mu$ A)	V <sub>BR MIN</sub> (V)	I <sub>T</sub> (mA)	V <sub>C</sub> (V)	I <sub>PP</sub> (A)	V <sub>WIB</sub> (V)	I <sub>IB</sub> (mA)	V <sub>PIR</sub> (V)	C <sub>J</sub> (pF)
SAC5.0	5.0	300	7.60	1.0	10.0	44.0	75	1.0	100	50
SAC6.0	6.0	300	7.90	1.0	11.2	41.0	75	1.0	100	50
SAC7.0	7.0	300	8.33	1.0	12.6	38.0	75	1.0	100	50
SAC8.0	8.0	100	8.89	1.0	13.4	36.0	75	1.0	100	50
SAC8.5	8.5	50	9.44	1.0	14.0	34.0	75	1.0	100	50
SAC10	10.0	5	11.10	1.0	16.3	29.0	75	1.0	100	50
SAC12	12.0	1	13.30	1.0	19.0	25.0	75	1.0	100	50
SAC15	15.0	1	16.70	1.0	23.6	20.0	75	1.0	100	50
SAC18	18.0	1	20.00	1.0	28.8	15.0	75	1.0	100	50
SAC22	22.0	1	24.40	1.0	35.4	14.0	75	1.0	100	50
SAC26	26.0	1	28.90	1.0	42.3	11.1	75	1.0	100	50
SAC30	30.0	1	33.30	1.0	48.6	10.0	75	1.0	100	50
SAC36	36.0	1	40.00	1.0	60.0	8.6	75	1.0	100	50
SAC45	45.0	1	50.00	1.0	77.0	6.8	150	1.0	100	50
SAC50	50.0	1	55.50	1.0	88.0	5.8	150	1.0	100	50