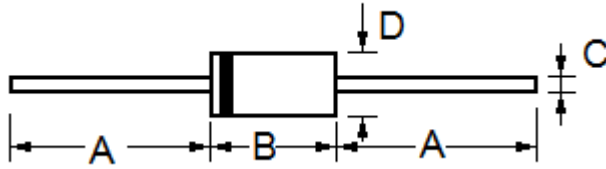


**低电容瞬态抑制二极管 Low Capacitance Axial Leaded TVS LCE6.5 -- LCE170A**

- 1500 Watt Peak Power
- Dimension

**DO-201AD**

Dim	Millimeters		Inches	
	Min	Max	Min	Max
A	25.4	---	1.000	---
B	7.2	9.5	0.285	0.375
C	1.2	1.3	0.048	0.052
D	4.8	5.3	0.188	0.210

- Specification

Type Number	Reverse Stand-Off Voltage	Breakdown Voltage Min. @I <sub>T</sub>	Breakdown Voltage Max. @ I <sub>T</sub>	Test Current	Maximum Clamping Voltage @I <sub>PP</sub>	Peak Pulse Current	Reverse Leakage @V <sub>RMW</sub>	Maximum Junction Capacitance @ 0 Volts
	V <sub>RMW</sub> (V)	V <sub>BR MIN</sub> (V)	V <sub>BR MAX</sub> (V)	I <sub>T</sub> (mA)	V <sub>C</sub> (V)	I <sub>PP</sub> (A)	I <sub>R</sub> (uA)	C <sub>J</sub> (pF)
LCE6.5	6.5	7.22	9.14	10.0	12.3	100.0	1000.0	100.0
LCE6.5A	6.5	7.22	8.30	10.0	11.2	100.0	1000.0	100.0
LCE7.0	7.0	7.78	9.86	10.0	13.3	100.0	500.0	100.0
LCE7.0A	7.0	7.78	8.95	10.0	12.0	100.0	500.0	100.0
LCE7.5	7.5	8.33	10.67	10.0	14.3	100.0	250.0	100.0
LCE7.5A	7.5	8.33	9.58	10.0	12.9	100.0	250.0	100.0
LCE8.0	8.0	8.89	11.3	1.0	15.0	100.0	100.0	100.0
LCE8.0A	8.0	8.89	10.23	1.0	13.6	100.0	100.0	100.0
LCE8.5	8.5	9.44	11.92	1.0	15.9	94.0	50.0	100.0
LCE8.5A	8.5	9.44	10.82	1.0	14.4	100.0	50.0	100.0
LCE9.0	9.0	10.0	12.6	1.0	16.9	89.0	10.0	100.0
LCE9.0A	9.0	10.0	11.5	1.0	15.4	97.0	10.0	100.0
LCE10	10	11.1	14.1	1.0	18.8	80.0	5.0	100.0
LCE10A	10	11.1	12.8	1.0	17.0	88.0	5.0	100.0
LCE11	11	12.2	15.4	1.0	20.1	75.0	5.0	100.0
LCE11A	11	12.2	14.0	1.0	18.2	82.0	5.0	100.0
LCE12	12	13.3	16.9	1.0	22.0	68.0	5.0	100.0
LCE12A	12	13.3	15.3	1.0	19.9	75.0	5.0	100.0
LCE13	13	14.4	18.2	1.0	23.8	63.0	5.0	100.0
LCE13A	13	14.4	16.5	1.0	21.5	70.0	5.0	100.0
LCE14	14	15.6	19.8	1.0	25.8	58.0	5.0	100.0
LCE14A	14	15.6	17.9	1.0	23.2	65.0	5.0	100.0
LCE15	15	16.7	21.1	1.0	26.9	56.0	5.0	100.0
LCE15A	15	16.7	19.2	1.0	24.4	61.0	5.0	100.0

**低电容瞬态抑制二极管 Low Capacitance Axial Leaded TVS LCE6.5 -- LCE170A**

Type Number	Reverse Stand-Off Voltage	Breakdown Voltage Min. @I <sub>T</sub>	Breakdown Voltage Max. @ I <sub>T</sub>	Test Current	Maximum Clamping Voltage @I <sub>PP</sub>	Peak Pulse Current	Reverse Leakage @V <sub>RMW</sub>	Maximum Junction Capacitance @ 0 Volts
	V <sub>RMW</sub> (V)	V <sub>BR MIN</sub> (V)	V <sub>BR MAX</sub> (V)	I <sub>T</sub> (mA)	V <sub>C</sub> (V)	I <sub>PP</sub> (A)	I <sub>R</sub> (uA)	C <sub>J</sub> (pF)
LCE16	16	17.8	22.6	1.0	28.8	52.0	5.0	100.0
LCE16A	16	17.8	20.5	1.0	26.0	58.0	5.0	100.0
LCE17	17	18.9	23.9	1.0	30.5	49.0	5.0	100.0
LCE17A	17	18.9	21.7	1.0	27.6	54.0	5.0	100.0
LCE18	18	20.0	25.3	1.0	32.2	47.0	5.0	100.0
LCE18A	18	20.0	23.3	1.0	29.2	51.0	5.0	100.0
LCE20	20	22.2	28.1	1.0	35.8	42.0	5.0	100.0
LCE20A	20	22.2	25.5	1.0	32.4	46.0	5.0	100.0
LCE22	22	24.4	30.9	1.0	39.4	38.0	5.0	100.0
LCE22A	22	24.4	28.0	1.0	35.5	42.0	5.0	100.0
LCE24	24	26.7	33.8	1.0	43.0	35.0	5.0	100.0
LCE24A	24	26.7	30.7	1.0	38.9	39.0	5.0	100.0
LCE26	26	28.9	36.6	1.0	46.6	32.0	5.0	100.0
LCE26A	26	28.9	33.2	1.0	42.1	36.0	5.0	100.0
LCE28	28	31.1	39.4	1.0	50.0	30.0	5.0	100.0
LCE28A	28	31.1	35.8	1.0	45.4	33.0	5.0	100.0
LCE30	30	33.3	42.2	1.0	53.5	28.0	5.0	100.0
LCE30A	30	33.3	38.3	1.0	48.4	31.0	5.0	100.0
LCE33	33	36.7	46.5	1.0	59.0	25.0	5.0	100.0
LCE33A	33	36.7	42.2	1.0	53.3	28.0	5.0	100.0
LCE36	36	40.0	50.7	1.0	64.3	23.0	5.0	100.0
LCE36A	36	40.0	46.0	1.0	58.1	26.0	5.0	100.0
LCE40	40	44.4	56.3	1.0	71.4	21.0	5.0	100.0
LCE40A	40	44.4	51.1	1.0	64.5	23.0	5.0	100.0
LCE43	43	47.8	60.5	1.0	76.7	20.0	5.0	100.0
LCE43A	43	47.8	54.9	1.0	69.4	22.0	5.0	100.0
LCE45	45	50.0	63.3	1.0	80.3	19.0	5.0	100.0
LCE45A	45	50.0	57.5	1.0	72.7	21.0	5.0	100.0
LCE48	48	53.3	67.5	1.0	85.5	18.0	5.0	100.0
LCE48A	48	53.3	61.3	1.0	77.4	19.0	5.0	100.0
LCE51	51	56.7	71.8	1.0	91.1	16.0	5.0	100.0
LCE51A	51	56.7	65.2	1.0	82.4	18.0	5.0	100.0
LCE54	54	60.0	76.0	1.0	96.3	16.0	5.0	100.0
LCE54A	54	60.0	69.0	1.0	87.1	17.0	5.0	100.0
LCE58	58	64.4	81.6	1.0	103	15.0	5.0	100.0
LCE58A	58	64.4	74.1	1.0	93.6	16.0	5.0	100.0



## 低电容瞬态抑制二极管 Low Capacitance Axial Leaded TVS LCE6.5 -- LCE170A

Type Number	Reverse Stand-Off Voltage	Breakdown Voltage Min. @I <sub>T</sub>	Breakdown Voltage Max. @ I <sub>T</sub>	Test Current	Maximum Clamping Voltage @I <sub>PP</sub>	Peak Pulse Current	Reverse Leakage @V <sub>RMW</sub>	Maximum Junction Capacitance @ 0 Volts
	V <sub>RMW</sub> (V)	V <sub>BR MIN</sub> (V)	V <sub>BR MAX</sub> (V)	I <sub>T</sub> (mA)	V <sub>C</sub> (V)	I <sub>PP</sub> (A)	I <sub>R</sub> (uA)	C <sub>J</sub> (pF)
LCE60	60	66.7	84.5	1.0	107	14.0	5.0	100.0
LCE60A	60	66.7	76.7	1.0	96.8	15.0	5.0	100.0
LCE64	64	71.1	90.1	1.0	114	13.0	5.0	100.0
LCE64A	64	71.1	81.8	1.0	103	15.0	5.0	100.0
LCE70	70	77.8	98.6	1.0	125	12.0	5.0	100.0
LCE70A	70	77.8	89.5	1.0	113	13.0	5.0	100.0
LCE75	75	83.0	105.7	1.0	134	11.0	5.0	100.0
LCE75A	75	83.0	95.8	1.0	121	12.0	5.0	100.0
LCE78	78	86.0	109.8	1.0	139	11.0	5.0	100.0
LCE78A	78	86.0	99.7	1.0	126	12.0	5.0	100.0
LCE85	85	94.0	119.2	1.0	151	10.0	5.0	100.0
LCE85A	85	94.0	108.2	1.0	137	11.0	5.0	100.0
LCE90	90	100	126.5	1.0	160	9.0	5.0	100.0
LCE90A	90	100	115.5	1.0	146	10.0	5.0	100.0
LCE100	100	111	141.0	1.0	179	8.0	5.0	100.0
LCE100A	100	111	128.0	1.0	162	9.0	5.0	100.0
LCE110	110	122	154.5	1.0	196	8.0	5.0	100.0
LCE110A	110	122	140.5	1.0	177	8.0	5.0	100.0
LCE120	120	133	169.0	1.0	214	7.0	5.0	100.0
LCE120A	120	133	153.0	1.0	193	8.0	5.0	100.0
LCE130	130	144	182.5	1.0	231	6.0	5.0	100.0
LCE130A	130	144	165.5	1.0	209	7.0	5.0	100.0
LCE150	150	167	211.5	1.0	268	6.0	5.0	100.0
LCE150A	150	167	192.5	1.0	243	6.0	5.0	100.0
LCE160	160	178	226.0	1.0	287	5.0	5.0	100.0
LCE160A	160	178	205.0	1.0	259	6.0	5.0	100.0
LCE170	170	189	239.5	1.0	304	5.0	5.0	100.0
LCE170A	170	189	217.5	1.0	275	5.0	5.0	100.0